

NEW PADDOCK AND JOCKEY QUARTERS

Two-storey jockey quarters and paddock designed to support horse racing operations by providing essential spaces for jockeys, horses, and staff. The layout includes saddling stalls, jockey lockers, bunk rooms, shower and toilet facilities, recreation areas, and service spaces, all organized to ensure efficient circulation and functional use.

MASTERPLAN / SITE STRATEGY



- 01**

Training Loop

Optimized movement cycle.
- 02**

Recovery Paddock

Calm central observation area.
- 03**

Viewing Area

Elevated Platform for Spectators.
- 04**

Stable Core

Modular system for horse care.

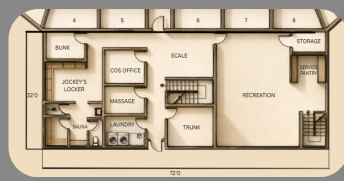


Designed around trust, rhythm, and care.

ARCHITECTURAL FLOOR LAYOUT

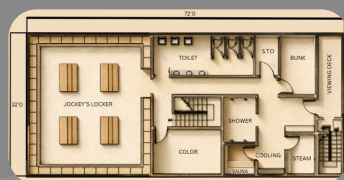
1st Floor

Houses the main paddock support spaces, including saddling stalls, jockey lockers, bunk rooms, and service areas.



2nd Floor

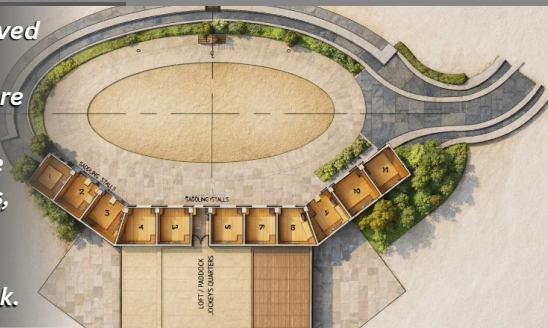
Provides supplementary spaces and viewing access while maintaining operational efficiency.



- Saddling stalls arranged along the paddock perimeter
- Central jockey's lockers for easy access
- Bunk rooms, showers, and toilets for jockey accommodations
- Recreation, laundry, storage, and service rooms
- Efficient circulation between stalls and support areas

DESIGN CONCEPT

The building follows a curved form that responds to the paddock layout. Spaces are arranged to ensure clear separation between horse areas and jockey facilities, while maintaining direct access and visual connection to the paddock.



CONCLUSION

The paddock and jockey quarters provide a functional, organized, and race-ready facility designed to meet operational needs.